



## YOKE SWIVEL HOIST RINGS



### Introduction:

- Designed for lifting heavy loads, YOKE Swivel Hoist Ring is innovative and meets all requirements of occupational health and safety.
- Modern design and construction provide the most dependable lifting and lashing mean with the easiest fitting for heavy loads of different material and shape.
- Due to its ball bearing construction, YOKE Swivel Hoist Ring rotates freely through 360°. This free movement makes it easy to handle and turns it automatically in direction of load.



### Main Features:

- Easy to install – needs only one tap hole.
- Supplying both Bushing type and Ball bearing inside.
- Rotates thru 360° Pivots thru 180°
- Designed safety factor 5:1.
- 100% rated at 90° angle.
- 100% magnaflux crack detection.
- Proof load tested to 2.5 times W.L.L. and certified.
- 20,000 cycle fatigue rated to 1.5 times W.L.L.
- Each product has a batch code for material traceability and links to Test Certificate.
- Drop forged Suspension Ring.
- The Bolt has a result of Charpy-V-test according to EN 10045, part 1 of at least 27 Joules at -20° C.
- Bolt are both UNC grade 8 per ASTM A 574 and Metric Grade 12.9 per DIN EN ISO 4762.
- Multi directional loading.
- Self aligns in direction of load.
- Avoids torsion forces to the suspension ring - more safety.
- No friction transferred to the bolt as it turns - longer lifetime.
- The Bolt with galvanized alternative Phosphate treatment for increased corrosion protection.

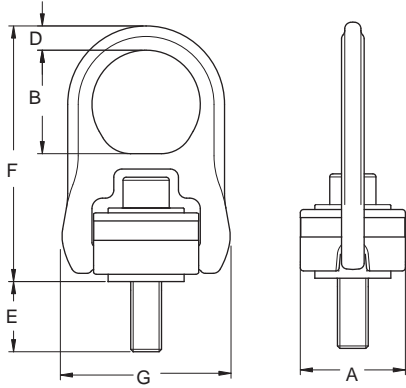
## YOKE Hoist Ring Working Load Application

| number of leg | load direction | 1       | 2     | 1     | 2     | 2     | 2     | 3-4   | 3-4   | 0-45° | 45-60° | unsymm. | 0-45° | 45-60° | unsymm. | 0-45° | 45-60° | unsymm. | 0-45° | 45-60° | unsymm. |       |
|---------------|----------------|---------|-------|-------|-------|-------|-------|-------|-------|-------|--------|---------|-------|--------|---------|-------|--------|---------|-------|--------|---------|-------|
| Item NO.      | Thread         | WLL lbs |       |       |       |       |       |       |       |       |        |         |       |        |         |       |        |         |       |        |         |       |
| 8-204-004     | 8-202-004      | 5/16"   | 800   | 800   | 1600  | 800   | 1600  | 1120  | 800   | 800   | 1680   | 1200    | 800   | 1680   | 1200    | 800   | 1680   | 1200    | 800   | 1680   | 1200    | 800   |
| 8-204-005     | 8-202-005      | 3/8"    | 1000  | 1000  | 2000  | 1000  | 2000  | 1400  | 1000  | 1000  | 2100   | 1500    | 1000  | 2100   | 1500    | 1000  | 2100   | 1500    | 1000  | 2100   | 1500    | 1000  |
| 8-204-010     | 8-202-010      | 1/2"    | 2500  | 2500  | 5000  | 2500  | 5000  | 3500  | 2500  | 2500  | 5250   | 3750    | 2500  | 5250   | 3750    | 2500  | 5250   | 3750    | 2500  | 5250   | 3750    | 2500  |
| 8-204-010L    | 8-202-010L     | 1/2"    | 2500  | 2500  | 5000  | 2500  | 5000  | 3500  | 2500  | 2500  | 5250   | 3750    | 2500  | 5250   | 3750    | 2500  | 5250   | 3750    | 2500  | 5250   | 3750    | 2500  |
| 8-204-019     | 8-202-019      | 5/8"    | 4000  | 4000  | 8000  | 4000  | 8000  | 5600  | 4000  | 4000  | 8400   | 6000    | 4000  | 8400   | 6000    | 4000  | 8400   | 6000    | 4000  | 8400   | 6000    | 4000  |
| 8-204-019L    | 8-202-019L     | 5/8"    | 4000  | 4000  | 8000  | 4000  | 8000  | 5600  | 4000  | 4000  | 8400   | 6000    | 4000  | 8400   | 6000    | 4000  | 8400   | 6000    | 4000  | 8400   | 6000    | 4000  |
| 8-204-021     | 8-202-021      | 3/4"    | 5000  | 5000  | 10000 | 5000  | 10000 | 7000  | 5000  | 5000  | 10500  | 7500    | 5000  | 10500  | 7500    | 5000  | 10500  | 7500    | 5000  | 10500  | 7500    | 5000  |
| 8-204-021L    | 8-202-021L     | 3/4"    | 5000  | 5000  | 10000 | 5000  | 10000 | 7000  | 5000  | 5000  | 10500  | 7500    | 5000  | 10500  | 7500    | 5000  | 10500  | 7500    | 5000  | 10500  | 7500    | 5000  |
| 8-204-030     | 8-202-030      | 3/4"    | 7000  | 7000  | 14000 | 7000  | 14000 | 9800  | 7000  | 7000  | 14700  | 10500   | 7000  | 14700  | 10500   | 7000  | 14700  | 10500   | 7000  | 14700  | 10500   | 7000  |
| 8-204-030L    | 8-202-030L     | 3/4"    | 7000  | 7000  | 14000 | 7000  | 14000 | 9800  | 7000  | 7000  | 14700  | 10500   | 7000  | 14700  | 10500   | 7000  | 14700  | 10500   | 7000  | 14700  | 10500   | 7000  |
| 8-204-042     | 8-202-042      | 7/8"    | 8000  | 8000  | 16000 | 8000  | 16000 | 11200 | 8000  | 8000  | 16800  | 12000   | 8000  | 16800  | 12000   | 8000  | 16800  | 12000   | 8000  | 16800  | 12000   | 8000  |
| 8-204-042L    | 8-202-042L     | 7/8"    | 8000  | 8000  | 16000 | 8000  | 16000 | 11200 | 8000  | 8000  | 16800  | 12000   | 8000  | 16800  | 12000   | 8000  | 16800  | 12000   | 8000  | 16800  | 12000   | 8000  |
| 8-204-045     | 8-202-045      | 1"      | 10000 | 10000 | 20000 | 10000 | 20000 | 14000 | 10000 | 10000 | 21000  | 15000   | 10000 | 21000  | 15000   | 10000 | 21000  | 15000   | 10000 | 21000  | 15000   | 10000 |
| 8-204-045L    | 8-202-045L     | 1"      | 10000 | 10000 | 20000 | 10000 | 20000 | 14000 | 10000 | 10000 | 21000  | 15000   | 10000 | 21000  | 15000   | 10000 | 21000  | 15000   | 10000 | 21000  | 15000   | 10000 |
| 8-204-070     |                | 1-1/4"  | 15000 | 15000 | 30000 | 15000 | 30000 | 21000 | 15000 | 15000 | 31500  | 22500   | 15000 | 31500  | 22500   | 15000 | 31500  | 22500   | 15000 | 31500  | 22500   | 15000 |
| 8-204-125     |                | 1-1/2"  | 24000 | 24000 | 48000 | 24000 | 48000 | 33600 | 24000 | 24000 | 50400  | 36000   | 24000 | 50400  | 36000   | 24000 | 50400  | 36000   | 24000 | 50400  | 36000   | 24000 |
| 8-204-135     |                | 2"      | 30000 | 30000 | 60000 | 30000 | 60000 | 42000 | 30000 | 30000 | 63000  | 45000   | 30000 | 63000  | 45000   | 30000 | 63000  | 45000   | 30000 | 63000  | 45000   | 30000 |

★ β ≤ 60°

| number of leg | load direction | 1           | 2     | 1     | 2     | 2     | 2     | 3-4   | 3-4   | 0-45° | 45-60° | unsymm. | 0-45° | 45-60° | unsymm. | 0-45° | 45-60° | unsymm. | 0-45° | 45-60° | unsymm. |       |
|---------------|----------------|-------------|-------|-------|-------|-------|-------|-------|-------|-------|--------|---------|-------|--------|---------|-------|--------|---------|-------|--------|---------|-------|
| Item NO.      | Thread         | WLL tonnes* |       |       |       |       |       |       |       |       |        |         |       |        |         |       |        |         |       |        |         |       |
| 8-203-004     | 8-201-004      | M 8         | 0.5   | 0.50  | 1.00  | 0.50  | 1.00  | 0.70  | 0.50  | 0.50  | 1.05   | 0.75    | 0.50  | 1.05   | 0.75    | 0.50  | 1.05   | 0.75    | 0.50  | 1.05   | 0.75    | 0.50  |
| 8-203-005     | 8-201-005      | M 10        | 0.55  | 0.55  | 1.10  | 0.55  | 1.10  | 0.77  | 0.55  | 0.55  | 1.16   | 0.83    | 0.55  | 1.16   | 0.83    | 0.55  | 1.16   | 0.83    | 0.55  | 1.16   | 0.83    | 0.55  |
| 8-203-010     | 8-201-010      | M 10        | 0.55  | 0.55  | 1.10  | 0.55  | 1.10  | 0.77  | 0.55  | 0.55  | 1.16   | 0.83    | 0.55  | 1.16   | 0.83    | 0.55  | 1.16   | 0.83    | 0.55  | 1.16   | 0.83    | 0.55  |
| 8-203-010L    | 8-201-010L     | M 12        | 1.3   | 1.30  | 2.60  | 1.30  | 2.60  | 1.82  | 1.30  | 1.30  | 2.73   | 1.95    | 1.30  | 2.73   | 1.95    | 1.30  | 2.73   | 1.95    | 1.30  | 2.73   | 1.95    | 1.30  |
| 8-203-019     | 8-201-019      | M 12        | 1.3   | 1.30  | 2.60  | 1.30  | 2.60  | 1.82  | 1.30  | 1.30  | 2.73   | 1.95    | 1.30  | 2.73   | 1.95    | 1.30  | 2.73   | 1.95    | 1.30  | 2.73   | 1.95    | 1.30  |
| 8-203-019L    | 8-201-019L     | M 16        | 2.4   | 2.40  | 4.80  | 2.40  | 4.80  | 3.36  | 2.40  | 2.40  | 5.04   | 3.60    | 2.40  | 5.04   | 3.60    | 2.40  | 5.04   | 3.60    | 2.40  | 5.04   | 3.60    | 2.40  |
| 8-203-021     | 8-201-021      | M 16        | 2.4   | 2.40  | 4.80  | 2.40  | 4.80  | 3.36  | 2.40  | 2.40  | 5.04   | 3.60    | 2.40  | 5.04   | 3.60    | 2.40  | 5.04   | 3.60    | 2.40  | 5.04   | 3.60    | 2.40  |
| 8-203-021L    | 8-201-021L     | M 20        | 2.7   | 2.70  | 5.40  | 2.70  | 5.40  | 3.78  | 2.70  | 2.70  | 5.67   | 4.05    | 2.70  | 5.67   | 4.05    | 2.70  | 5.67   | 4.05    | 2.70  | 5.67   | 4.05    | 2.70  |
| 8-203-030     | 8-201-030      | M 20        | 2.7   | 2.70  | 5.40  | 2.70  | 5.40  | 3.78  | 2.70  | 2.70  | 5.67   | 4.05    | 2.70  | 5.67   | 4.05    | 2.70  | 5.67   | 4.05    | 2.70  | 5.67   | 4.05    | 2.70  |
| 8-203-030L    | 8-201-030L     | M 20        | 3.75  | 3.75  | 7.50  | 3.75  | 7.50  | 5.25  | 3.75  | 3.75  | 7.88   | 5.63    | 3.75  | 7.88   | 5.63    | 3.75  | 7.88   | 5.63    | 3.75  | 7.88   | 5.63    | 3.75  |
| 8-203-042     | 8-201-042      | M 20        | 3.75  | 3.75  | 7.50  | 3.75  | 7.50  | 5.25  | 3.75  | 3.75  | 7.88   | 5.63    | 3.75  | 7.88   | 5.63    | 3.75  | 7.88   | 5.63    | 3.75  | 7.88   | 5.63    | 3.75  |
| 8-203-042L    | 8-201-042L     | M 24        | 5.25  | 5.25  | 10.50 | 5.25  | 10.50 | 7.35  | 5.25  | 5.25  | 11.03  | 7.88    | 5.25  | 11.03  | 7.88    | 5.25  | 11.03  | 7.88    | 5.25  | 11.03  | 7.88    | 5.25  |
| 8-203-045     | 8-201-045      | M 24        | 5.25  | 5.25  | 10.50 | 5.25  | 10.50 | 7.35  | 5.25  | 5.25  | 11.03  | 7.88    | 5.25  | 11.03  | 7.88    | 5.25  | 11.03  | 7.88    | 5.25  | 11.03  | 7.88    | 5.25  |
| 8-203-045L    | 8-201-045L     | M 30        | 8.75  | 8.75  | 17.50 | 8.75  | 17.50 | 12.25 | 8.75  | 8.75  | 18.38  | 13.13   | 8.75  | 18.38  | 13.13   | 8.75  | 18.38  | 13.13   | 8.75  | 18.38  | 13.13   | 8.75  |
| 8-203-070     |                | M 36        | 13.75 | 13.75 | 27.50 | 13.75 | 27.50 | 19.25 | 13.75 | 13.75 | 28.88  | 20.63   | 13.75 | 28.88  | 20.63   | 13.75 | 28.88  | 20.63   | 13.75 | 28.88  | 20.63   | 13.75 |
| 8-203-125     |                | M 42        | 15.6  | 15.60 | 31.20 | 15.60 | 31.20 | 21.84 | 15.60 | 15.60 | 32.76  | 23.40   | 15.60 | 32.76  | 23.40   | 15.60 | 32.76  | 23.40   | 15.60 | 32.76  | 23.40   | 15.60 |
| 8-203-135     |                | M 48        | 16.9  | 16.90 | 33.80 | 16.90 | 33.80 | 23.66 | 16.90 | 16.90 | 35.49  | 25.35   | 16.90 | 35.49  | 25.35   | 16.90 | 35.49  | 25.35   | 16.90 | 35.49  | 25.35   | 16.90 |

★ β ≤ 60°



- All YOKE Swivel Hoist Rings meet or exceed all the requirement of ASME B30.26
- Hoist Ring Bail are designed by forged alloy steel, quenched and tempered.
- Each forged parts and cap screw with Batch code links to Test Certificate sheet.
- Hoist Rings are 360°swivel with 180°pivot function.
- Bolt are UNC thread, specification is a grade 8 alloy socket head cap screw per ASTM A 574.
- Proof Load individually to 2.5 times Working Load Limit and certified.
- 20,000 cycle fatigue rated to 1.5 times Working Load Limit.
- Rated at 100% at 90°angle.
- 100% magnaflux crack detection.

**Swivel Hoist Ring, with alloy steel washer.  
UNC thread**

| Item No.     | Working Load Limit<br>Lbs* | Torque in<br>ft. Lbs | Bolt Size       | Dimensions (inch) |      |      |      |       |      | N.W.<br>Lbs |
|--------------|----------------------------|----------------------|-----------------|-------------------|------|------|------|-------|------|-------------|
|              |                            |                      |                 | E                 | A    | B    | D    | F     | G    |             |
| 8-204-004    | 800                        | 7                    | 5/16 - 18 x 2   | 0.68              | 1.57 | 1.61 | 0.35 | 4.02  | 2.56 | 0.9         |
| 8-204-005    | 1000                       | 12                   | 3/8 - 16 x 2    | 0.68              | 1.57 | 1.61 | 0.35 | 4.02  | 2.56 | 0.9         |
| 8-204-010    | 2500                       | 28                   | 1/2 - 13 x 2.5  | 0.69              | 2.56 | 2.32 | 0.59 | 6.26  | 4.13 | 3.7         |
| § 8-204-010L | 2500                       | 28                   | 1/2 - 13 x 3.0  | 1.19              | 2.56 | 2.32 | 0.59 | 6.26  | 4.13 | 3.7         |
| 8-204-019    | 4000                       | 60                   | 5/8 - 11 x 2.5  | 0.69              | 2.56 | 2.32 | 0.59 | 6.26  | 4.13 | 4.0         |
| § 8-204-019L | 4000                       | 60                   | 5/8 - 11 x 3.25 | 1.44              | 2.56 | 2.32 | 0.59 | 6.26  | 4.13 | 4.0         |
| 8-204-021    | 5000                       | 100                  | 3/4 - 10 x 2.75 | 0.94              | 2.56 | 2.87 | 0.59 | 6.26  | 4.13 | 4.0         |
| § 8-204-021L | 5000                       | 100                  | 3/4 - 10 x 3.25 | 1.44              | 2.56 | 2.87 | 0.59 | 6.26  | 4.13 | 4.2         |
| 8-204-030    | 7000                       | 100                  | 3/4 - 10 x 3.0  | 0.83              | 3.35 | 2.87 | 0.59 | 6.26  | 5.28 | 9.0         |
| § 8-204-030L | 7000                       | 100                  | 3/4 - 10 x 3.75 | 1.58              | 3.35 | 2.87 | 0.87 | 8.03  | 5.28 | 9.5         |
| 8-204-042    | 8000                       | 160                  | 7/8 - 9x 3.5    | 1.33              | 3.35 | 2.87 | 0.87 | 8.03  | 5.28 | 9.3         |
| § 8-204-042L | 8000                       | 160                  | 7/8 - 9x 4.25   | 2.08              | 3.35 | 2.87 | 0.87 | 8.03  | 5.28 | 9.7         |
| 8-204-045    | 10000                      | 230                  | 1 - 8x 3.5      | 1.33              | 3.35 | 2.87 | 0.87 | 8.03  | 5.28 | 9.5         |
| § 8-204-045L | 10000                      | 230                  | 1 - 8x 4.5      | 2.33              | 3.35 | 2.87 | 0.87 | 8.03  | 5.28 | 10.1        |
| ** 8-204-070 | 15000                      | 470                  | 1 1/4 - 7x 4.5  | 2.22              | 3.95 | 3.15 | 1.00 | 8.58  | 6.30 | 14.8        |
| ** 8-204-125 | 24000                      | 800                  | 1 1/2 - 6x 6.5  | 3.15              | 4.72 | 4.29 | 1.38 | 12.09 | 8.66 | 36.4        |
| ** 8-204-135 | 30000                      | 1100                 | 2 - 4.5 x 6.5   | 3.15              | 4.72 | 4.29 | 1.38 | 12.09 | 8.66 | 38.6        |

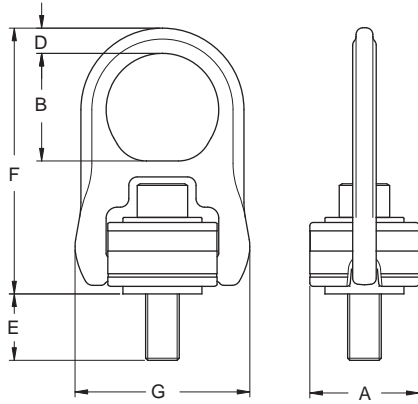
\* Minimum Ultimate Load is 5 times the Working Load Limit. \* Proof Load is 2.5 times the Working Load Limit.

§Long Bolts are designed for soft metal work piece.

The depths of thread need to be in a minimum 1 times thread for steel,1.25 times thread for cast iron and, 2 times thread for aluminum work piece.

\*\* Will be supplied with a hex head bolt.





**Ball Bearing Inside  
Patent**

- All YOKE Swivel Hoist Rings meet or exceed all the requirement of ASME B30.26
- Hoist Ring Bail are designed by forged alloy steel, quenched and tempered.
- Each forged parts and cap screw with Batch code links to Test Certificate sheet.
- Hoist Rings are 360°swivel with 180°pivot function.
- Ball bearing performs to fully swivel under load.
- Bolt are UNC thread, specification is a grade 8 alloy socket head cap screw per ASTM A 574.
- Proof Load individually to 2.5 times Working Load Limit and certified.
- 20,000 cycle fatigue rated to 1.5 times Working Load Limit.
- Rated at 100% at 90°angle.
- 100% magnaflux crack detection.

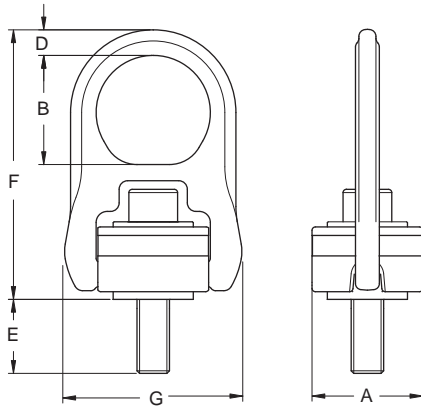
**Swivel Hoist Ring, with ball bearing.  
UNC thread**

| Item No.     | Working Load Limit | Torque in ft. Lbs | Bolt Size       | Dimensions (inch) |      |      |      |      |      | N.W. Lbs |
|--------------|--------------------|-------------------|-----------------|-------------------|------|------|------|------|------|----------|
|              | Lbs*               |                   |                 | E                 | A    | B    | D    | F    | G    |          |
| 8-202-004    | 800                | 7                 | 5/16 - 18 x 2   | 0.68              | 1.57 | 1.61 | 0.35 | 4.02 | 2.56 | 0.9      |
| 8-202-005    | 1000               | 12                | 3/8 - 16 x 2    | 0.68              | 1.57 | 1.61 | 0.35 | 4.02 | 2.56 | 0.9      |
| 8-202-010    | 2500               | 28                | 1/2 - 13 x 2.5  | 0.69              | 2.56 | 2.32 | 0.59 | 6.26 | 4.13 | 3.8      |
| § 8-202-010L | 2500               | 28                | 1/2 - 13 x 3.0  | 1.19              | 2.56 | 2.32 | 0.59 | 6.26 | 4.13 | 3.8      |
| 8-202-019    | 4000               | 60                | 5/8 - 11 x 2.5  | 0.69              | 2.56 | 2.32 | 0.59 | 6.26 | 4.13 | 3.8      |
| § 8-202-019L | 4000               | 60                | 5/8 - 11 x 3.25 | 1.44              | 2.56 | 2.32 | 0.59 | 6.26 | 4.13 | 4.0      |
| 8-202-021    | 5000               | 100               | 3/4 - 10 x 2.75 | 0.94              | 2.56 | 2.87 | 0.59 | 6.26 | 4.13 | 4.0      |
| § 8-202-021L | 5000               | 100               | 3/4 - 10 x 3.25 | 1.44              | 2.56 | 2.87 | 0.59 | 6.26 | 4.13 | 4.0      |
| 8-202-030    | 7000               | 100               | 3/4 - 10 x 3.0  | 0.83              | 3.35 | 2.87 | 0.59 | 6.26 | 5.28 | 9.0      |
| § 8-202-030L | 7000               | 100               | 3/4 - 10 x 3.75 | 1.58              | 3.35 | 2.87 | 0.87 | 8.03 | 5.28 | 9.3      |
| 8-202-042    | 8000               | 160               | 7/8 - 9x 3.5    | 1.33              | 3.35 | 2.87 | 0.87 | 8.03 | 5.28 | 9.2      |
| § 8-202-042L | 8000               | 160               | 7/8 - 9x 4.25   | 2.08              | 3.35 | 2.87 | 0.87 | 8.03 | 5.28 | 9.7      |
| 8-202-045    | 10000              | 230               | 1 - 8x 3.5      | 1.33              | 3.35 | 2.87 | 0.87 | 8.03 | 5.28 | 9.3      |
| § 8-202-045L | 10000              | 230               | 1 - 8x 4.5      | 2.33              | 3.35 | 2.87 | 0.87 | 8.03 | 5.28 | 9.7      |

\* Minimum Ultimate Load is 5 times the Working Load Limit. \* Proof Load is 2.5 times the Working Load Limit.

§Long Bolts are designed for soft metal work piece.

The depths of thread need to be in a minimum 1 times thread for steel, 1.25 times thread for cast iron and, 2 times thread for aluminum work piece.

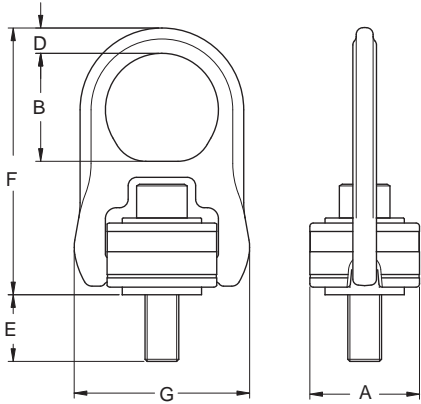


- All YOKE Swivel Hoist Rings meet or exceed all the requirement of ASME B30.26
- Each forged parts and cap screw with Batch code links to Test Certificate sheet.
- Hoist Ring Bail are designed by forged alloy steel, quenched and tempered.
- Hoist Rings are 360°swivel with 180°pivot function.
- Bolt are Metric thread (ASME / ANSI B18.3.1M), specification is a grade 12.9 alloy socket head screw per DIN EN ISO 4762.
- Proof Load individually to 2.5 times Working Load Limit and certified.
- 20,000 cycle fatigue rated to 1.5 times Working Load Limit.
- Rated at 100% at 90°angle.
- 100% magnaflux crack detection.

**Swivel Hoist Ring, with alloy steel washer.  
Metric thread**

| Item No.            | Working Load Limit |         | Torque in Nm | Bolt Size    | Dimensions (mm) |     |     |    |     |     | N.W. Kg |
|---------------------|--------------------|---------|--------------|--------------|-----------------|-----|-----|----|-----|-----|---------|
|                     | tonnes*            | tonnes* |              |              | E               | A   | B   | D  | F   | G   |         |
|                     | 5 : 1              | 4 : 1   |              |              |                 |     |     |    |     |     |         |
| <b>8-203-004</b>    | 0.40               | 0.50    | 10           | M 8x1.25x 50 | 17.0            | 40  | 41  | 9  | 102 | 65  | 0.4     |
| <b>8-203-005</b>    | 0.45               | 0.55    | 16           | M10x1.50x 45 | 11.0            | 40  | 41  | 9  | 102 | 65  | 0.5     |
| § <b>8-203-005L</b> | 0.45               | 0.55    | 16           | M10x1.50x 60 | 26.0            | 40  | 41  | 9  | 102 | 65  | 0.5     |
| § <b>8-203-010</b>  | 1.05               | 1.30    | 38           | M12x1.75x 60 | 15.0            | 65  | 64  | 15 | 158 | 105 | 1.7     |
| § <b>8-203-010L</b> | 1.05               | 1.30    | 38           | M12x1.75x 75 | 30.0            | 65  | 64  | 15 | 158 | 105 | 1.7     |
| § <b>8-203-019</b>  | 1.90               | 2.40    | 81           | M16x2.00x 65 | 20.0            | 65  | 64  | 15 | 158 | 105 | 1.8     |
| § <b>8-203-019L</b> | 1.90               | 2.40    | 81           | M16x2.00x 80 | 35.0            | 65  | 64  | 15 | 158 | 105 | 1.8     |
| <b>8-203-021</b>    | 2.15               | 2.70    | 136          | M20x2.50x 70 | 25.0            | 65  | 64  | 15 | 158 | 105 | 1.9     |
| <b>8-203-021L</b>   | 2.15               | 2.70    | 136          | M20x2.50x 90 | 45.0            | 65  | 64  | 15 | 158 | 105 | 2.1     |
| <b>8-203-030</b>    | 3.00               | 3.75    | 136          | M20x2.50x 80 | 25.0            | 85  | 79  | 19 | 204 | 134 | 4.2     |
| § <b>8-203-030L</b> | 3.00               | 3.75    | 136          | M20x2.50x100 | 45.0            | 85  | 79  | 19 | 204 | 134 | 4.2     |
| <b>8-203-042</b>    | 4.20               | 5.25    | 312          | M24x3.00x 80 | 26.0            | 85  | 79  | 19 | 204 | 134 | 4.2     |
| § <b>8-203-042L</b> | 4.20               | 5.25    | 312          | M24x3.00x110 | 56.0            | 85  | 79  | 19 | 204 | 134 | 4.3     |
| ** <b>8-203-070</b> | 7.00               | 8.75    | 637          | M30x3.50x140 | 81.0            | 100 | 100 | 25 | 241 | 160 | 6.7     |
| ** <b>8-203-110</b> | 11.00              | 13.75   | 1005         | M36x4.00x160 | 76.0            | 120 | 111 | 30 | 286 | 194 | 15.5    |
| ** <b>8-203-125</b> | 12.50              | 15.60   | 1005         | M42x4.50x180 | 95.0            | 120 | 111 | 30 | 286 | 220 | 16.5    |
| ** <b>8-203-135</b> | 13.50              | 16.90   | 1350         | M48x5.00x190 | 105.0           | 120 | 111 | 30 | 286 | 220 | 16.8    |
| ** <b>8-203-155</b> | 15.50              | 19.40   | 1350         | M56x5.50x180 | 94.0            | 138 | 109 | 34 | 308 | 241 | 19.3    |
| ** <b>8-203-223</b> | 22.30              | 27.90   | 2847         | M64x6.00x190 | 98.0            | 138 | 100 | 38 | 312 | 241 | 20.7    |
| ** <b>8-203-315</b> | 31.50              | 39.40   | 5830         | M72x6.00x240 | 131.0           | 166 | 127 | 45 | 377 | 300 | 43.0    |

\* Proof Load is 2.5 times the Working Load Limit on the 4:1 design factor. § Long Bolts are designed for soft metal work piece. The depths of thread need to be in a minimum 1 times thread for steel, 1.25 times thread for cast iron and, 2 times thread for aluminum work piece.  
\*\* Will be supplied with a hex head bolt.



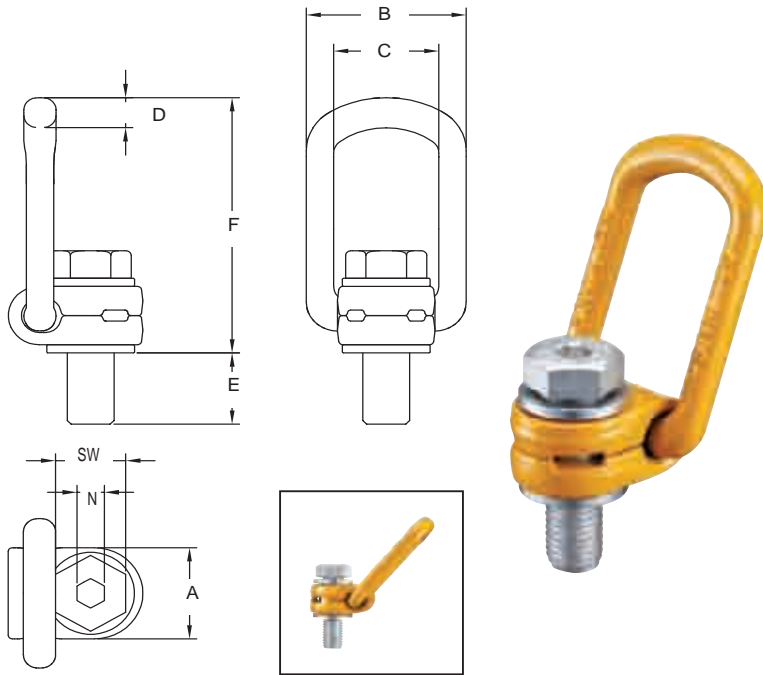
- All YOKE Swivel Hoist Rings meet or exceed all the requirement of ASME B30.26
- Each forged parts and cap screw with Batch code links to Test Certificate sheet.
- Hoist Ring Bail are designed by forged alloy steel, quenched and tempered.
- Ball bearing performs to fully swivel under load.
- Hoist Rings are 360°swivel with 180°pivot function.
- Bolt are Metric thread (ASME / ANSI B18.3.1M), specification is a grade 12.9 alloy socket head screw per DIN EN ISO 4762.
- Proof Load individually to 2.5 times Working Load Limit and certified.
- 20,000 cycle fatigue rated to 1.5 times Working Load Limit.
- Rated at 100% at 90°angle.
- 100% magnaflux crack detection.

**Ball Bearing Inside  
Patent**

**Swivel Hoist Ring, with ball bearing.  
Metric thread**

| Item No.            | Working Load Limit |       | Torque in Nm | Bolt Size    | Dimensions (mm) |    |    |    |     |     | N.W. kg |
|---------------------|--------------------|-------|--------------|--------------|-----------------|----|----|----|-----|-----|---------|
|                     | tonnes*            |       |              |              | E               | A  | B  | D  | F   | G   |         |
|                     | 5 : 1              | 4 : 1 |              |              |                 |    |    |    |     |     |         |
| <b>8-201-004</b>    | 0.40               | 0.50  | 10           | M 8x1.25x 50 | 16.5            | 40 | 41 | 9  | 102 | 65  | 0.4     |
| <b>8-201-005</b>    | 0.45               | 0.55  | 16           | M10x1.50x 45 | 11.5            | 40 | 41 | 9  | 102 | 65  | 0.4     |
| § <b>8-201-005L</b> | 0.45               | 0.55  | 16           | M10x1.50x 60 | 26.5            | 40 | 41 | 9  | 102 | 65  | 0.5     |
| <b>8-201-010</b>    | 1.05               | 1.30  | 38           | M12x1.75x 60 | 14.0            | 65 | 64 | 15 | 158 | 105 | 1.7     |
| § <b>8-201-010L</b> | 1.05               | 1.30  | 38           | M12x1.75x 75 | 29.0            | 65 | 64 | 15 | 158 | 105 | 2.1     |
| <b>8-201-019</b>    | 1.90               | 2.40  | 81           | M16x2.00x 65 | 19.0            | 65 | 64 | 15 | 158 | 105 | 1.7     |
| § <b>8-201-019L</b> | 1.90               | 2.40  | 81           | M16x2.00x 80 | 34.0            | 65 | 64 | 15 | 158 | 105 | 1.8     |
| <b>8-201-021</b>    | 2.15               | 2.70  | 136          | M20x2.50x 70 | 24.0            | 65 | 64 | 15 | 158 | 105 | 1.8     |
| § <b>8-201-021L</b> | 2.15               | 2.70  | 136          | M20x2.50x 90 | 44.0            | 65 | 64 | 15 | 158 | 105 | 1.8     |
| <b>8-201-030</b>    | 3.00               | 3.75  | 136          | M20x2.50x 80 | 25.0            | 85 | 79 | 19 | 204 | 134 | 4.1     |
| § <b>8-201-030L</b> | 3.00               | 3.75  | 136          | M20x2.50x100 | 45.0            | 85 | 79 | 19 | 204 | 134 | 4.2     |
| <b>8-201-042</b>    | 4.20               | 5.25  | 312          | M24x3.00x 80 | 25.0            | 85 | 79 | 19 | 204 | 134 | 4.2     |
| § <b>8-201-042L</b> | 4.20               | 5.25  | 312          | M24x3.00x110 | 50.0            | 85 | 79 | 19 | 204 | 134 | 4.3     |

\* Proof Load is 2.5 times the Working Load Limit on the 4:1 design factor.§Long Bolts are designed for soft metal work piece.  
The depths of thread need to be in a minimum 1 times thread for steel,1.25 times thread for cast iron and, 2 times thread for aluminum work piece.



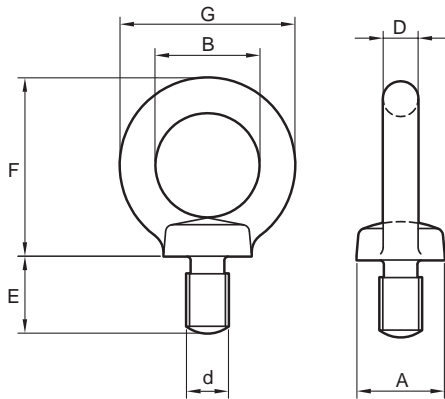
- All YOKE Swivel Hoist Rings meet or exceed all the requirement of ASME B30.26
- Each forged parts and cap screw with Batch code links to Test Certificate sheet.
- Hoist Ring Bail are designed by forged alloy steel, quenched and tempered.
- Hoist Rings are 360°swivel with 180°pivot function.
- Bolt are Metric thread (ASME / ANSI B18.3.1M), specification is a grade 12.9 alloy socket head screw per DIN EN ISO 4762.
- Proof Load individually to 2.5 times Working Load Limit and certified.
- 20,000 cycle fatigue rated to 1.5 times Working Load Limit.
- Rated at 100% at 90°angle.
- 100% magnaflux crack detection.

## Lateral Pull Ring Metric thread

| Item No.  | Working Load Limit<br>tonnes* | Torque in<br>Nm | Bolt Size    | Dimensions (mm) |    |    |     |      |     |    |    | N.W.<br>Kg |
|-----------|-------------------------------|-----------------|--------------|-----------------|----|----|-----|------|-----|----|----|------------|
|           |                               |                 |              | C               | E  | A  | B   | D    | F   | N  | SW |            |
| 8-211-003 | 0.3                           | 30              | M 8x1.25x 40 | 35              | 12 | 30 | 55  | 10.0 | 85  | 6  | 13 | 0.2        |
| 8-211-006 | 0.63                          | 60              | M10x1.50x 45 | 35              | 17 | 30 | 55  | 10.0 | 85  | 8  | 17 | 0.3        |
| 8-211-010 | 1.0                           | 100             | M12x1.75x 60 | 37              | 25 | 33 | 57  | 13.5 | 98  | 8  | 19 | 0.5        |
| 8-211-012 | 1.2                           | 120             | M14x2.00x 60 | 37              | 25 | 33 | 57  | 13.5 | 98  | 10 | 22 | 0.5        |
| 8-211-015 | 1.5                           | 150             | M16x2.00x 60 | 37              | 25 | 33 | 57  | 13.5 | 98  | 10 | 24 | 0.5        |
| 8-211-020 | 2.0                           | 200             | M18x2.00x 60 | 54              | 29 | 50 | 82  | 16.5 | 140 | 12 | 27 | 1.3        |
| 8-211-025 | 2.5                           | 250             | M20x2.50x 80 | 54              | 39 | 50 | 82  | 16.5 | 140 | 12 | 30 | 1.3        |
| 8-211-040 | 4.0                           | 400             | M24x3.00x 80 | 54              | 39 | 50 | 82  | 16.5 | 140 | 14 | 36 | 1.4        |
| 8-211-042 | 4.0                           | 400             | M27x3.00x100 | 65              | 40 | 60 | 99  | 22.5 | 170 | 17 | 41 | 2.8        |
| 8-211-050 | 5.0                           | 500             | M30x3.50x110 | 65              | 50 | 60 | 99  | 22.5 | 170 | 17 | 46 | 3.1        |
| 8-211-070 | 7.0                           | 700             | M36x4.00x116 | 65              | 53 | 60 | 99  | 22.5 | 178 | 22 | 55 | 3.3        |
| 8-211-080 | 8.0                           | 800             | M36x4.00x140 | 85              | 62 | 77 | 124 | 26.5 | 225 | 22 | 55 | 5.8        |
| 8-211-100 | 10.0                          | 1000            | M42x4.50x150 | 85              | 73 | 77 | 124 | 26.5 | 225 | 24 | 64 | 6.3        |
| 8-211-150 | 15.0                          | 1500            | M42x4.50x150 | 104             | 60 | 95 | 158 | 36.0 | 261 | 24 | 64 | 10.9       |
| 8-211-200 | 20.0                          | 2000            | M48x5.00x160 | 104             | 69 | 95 | 158 | 36.0 | 261 | 27 | 74 | 11.6       |

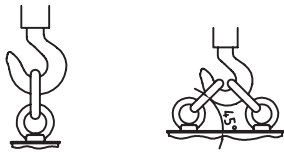
\* Minimum Ultimate Load is 4 times the Working Load Limit.

\* Proof Load is 2.5 times the Working Load Limit.



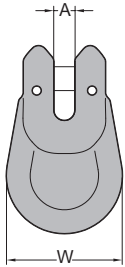
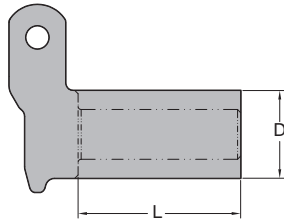
- Forged Steel - Quenched & Tempered.
- Working Load Limits shown are for in-line pull.
- Fatigue rated at 1-1/2 times the Working Load Limit at 20,000 cycles.
- Recommended for in-line pull.
- Threaded depends on request.

## Shoulder Type Machinery Eye Bolts

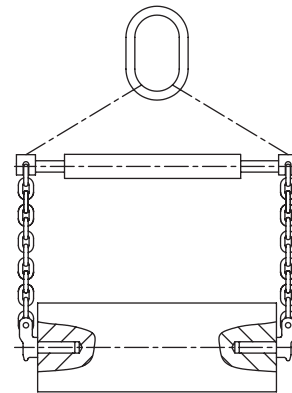


| Item No. | Hang For               |                | Dimensions (mm) |     |     |     |    |    |     | N.W.<br>Kg |
|----------|------------------------|----------------|-----------------|-----|-----|-----|----|----|-----|------------|
|          | One Bolt (90°)         | Two Bolt (45°) | d               | G   | B   | F   | E  | D  | A   |            |
|          | Working Load Limit(Kg) |                |                 |     |     |     |    |    |     |            |
| 8-221-08 | 80                     | 80             | M 8x1.25        | 33  | 20  | 33  | 15 | 6  | 16  | 0.06       |
| 8-221-10 | 150                    | 150            | M10x1.50        | 41  | 25  | 41  | 18 | 8  | 20  | 0.11       |
| 8-221-12 | 220                    | 220            | M12x1.75        | 50  | 30  | 51  | 22 | 10 | 25  | 0.18       |
| 8-221-16 | 450                    | 450            | M16x2.0         | 60  | 35  | 60  | 27 | 13 | 30  | 0.28       |
| 8-221-20 | 630                    | 630            | M20x2.50        | 72  | 40  | 71  | 30 | 16 | 35  | 0.45       |
| 8-221-24 | 950                    | 950            | M24x3.00        | 90  | 50  | 90  | 38 | 20 | 45  | 0.74       |
| 8-221-30 | 1500                   | 1500           | M30x3.50        | 110 | 60  | 110 | 45 | 25 | 60  | 1.60       |
| 8-221-36 | 2300                   | 2300           | M36x4.00        | 133 | 70  | 132 | 55 | 32 | 70  | 2.60       |
| 8-221-42 | 3400                   | 3400           | M42x4.50        | 151 | 80  | 151 | 65 | 36 | 80  | 4.00       |
| 8-221-48 | 4500                   | 4500           | M48x5.00        | 170 | 90  | 170 | 70 | 40 | 90  | 6.30       |
| 8-221-64 | 9000                   | 9000           | M64x6.00        | 210 | 110 | 210 | 90 | 50 | 110 | 12.40      |

★ Proof Load is 3 times



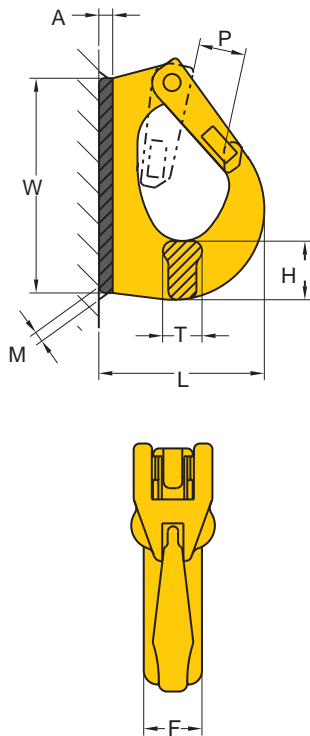
- Always indicate length L and diameter size D of the plug-in connector when ordering.
- Bore diameter = D+1 mm
- Minimum bolt length L=2xd min



### Plug-in Connector

| Item No. | Working Load Limit<br>Lbs* | For Grade 80 Chain<br>inch | Dimensions (inch) |      |      |         | L             | N.W.<br>Lbs |
|----------|----------------------------|----------------------------|-------------------|------|------|---------|---------------|-------------|
|          |                            |                            | A                 | W    | D    | d min** |               |             |
| 8-098-06 | 2100                       | 7/32                       | 0.24              | 1.46 | 1.10 | 0.67    |               | 0.9         |
| 8-098-07 | 4500                       | 1/4~5/16                   | 0.35              | 1.97 | 1.18 | 0.87    | L min=2xd min | 1.3         |
| 8-098-10 | 7100                       | 3/8                        | 0.43              | 2.36 | 1.36 | 1.10    |               | 2.4         |

| Item No. | Working Load Limit<br>tonnes* | For Grade 80 Chain<br>mm | Dimensions (mm) |    |      |         | L             | N.W.<br>Kg |
|----------|-------------------------------|--------------------------|-----------------|----|------|---------|---------------|------------|
|          |                               |                          | A               | W  | D    | d min** |               |            |
| 8-098-06 | 1.12                          | 6                        | 6               | 37 | 28   | 17      |               | 0.4        |
| 8-098-07 | 2.0                           | 7,8                      | 9               | 50 | 30   | 22      | L min=2xd min | 0.6        |
| 8-098-10 | 3.15                          | 13                       | 11              | 60 | 34.5 | 28      |               | 1.1        |



- Designed for attachment to mobile lifting equipment to provide a pick point for easy sling attachment.
- Forged Alloy Steel.
- Wide range of sizes available: 1-10 Metric Ton capacity.
- Large weld pad.
- Heavy duty latch interlocks with the hook tip. Replacement latches available.

**Excavator Weld-on Hook. Code “YX” .**

| Item No. | Working Load Limit | Dimensions (inch) |      |      |      |      |      |      |      | N.W. |
|----------|--------------------|-------------------|------|------|------|------|------|------|------|------|
|          | Lbs*               | P                 | L    | T    | H    | F    | W    | A    | M    | Lbs  |
| 8-081-01 | 2,200              | 0.87              | 2.87 | 0.67 | 0.91 | 0.98 | 3.74 | 0.28 | 0.16 | 1.3  |
| 8-081-02 | 4,400              | 1.14              | 3.46 | 0.83 | 1.18 | 1.18 | 4.49 | 0.35 | 0.20 | 2.2  |
| 8-081-03 | 6,600              | 1.14              | 4.17 | 0.91 | 1.18 | 1.38 | 5.24 | 0.39 | 0.24 | 3.1  |
| 8-081-04 | 8,800              | 1.22              | 4.41 | 1.14 | 1.54 | 1.65 | 5.59 | 0.47 | 0.28 | 4.4  |
| 8-081-05 | 11,000             | 1.34              | 5.16 | 1.18 | 1.81 | 1.77 | 6.54 | 0.51 | 0.31 | 6.6  |
| 8-081-08 | 17,600             | 1.38              | 5.24 | 1.54 | 2.01 | 1.97 | 6.81 | 0.51 | 0.35 | 8.4  |
| 8-081-10 | 22,000             | 1.97              | 6.69 | 1.73 | 2.36 | 2.20 | 8.70 | 0.55 | 0.35 | 13.9 |

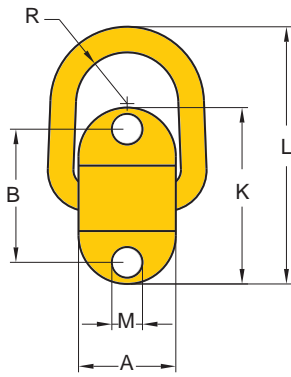
★ Design factor 5:1

YOKE recommends that the working load limit is reduced to meet any appropriate legislative requirements, if welding on to an excavator. Please contact your YOKE distributors for further information.

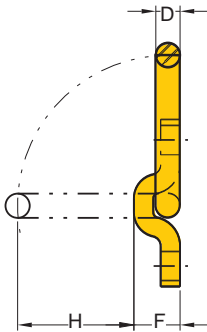
| Item No. | Working Load Limit | Dimensions (mm) |     |    |    |    |     |    |   | N.W. |
|----------|--------------------|-----------------|-----|----|----|----|-----|----|---|------|
|          | tonnes*            | P               | L   | T  | H  | F  | W   | A  | M | Kg   |
| 8-081-01 | 1.0                | 18              | 70  | 18 | 27 | 25 | 95  | 7  | 4 | 0.6  |
| 8-081-02 | 2.0                | 25              | 85  | 20 | 30 | 30 | 115 | 8  | 5 | 1.0  |
| 8-081-03 | 3.0                | 28              | 107 | 23 | 30 | 35 | 133 | 9  | 6 | 1.4  |
| 8-081-04 | 4.0                | 28              | 114 | 30 | 38 | 42 | 142 | 10 | 7 | 2.0  |
| 8-081-05 | 5.0                | 30              | 135 | 31 | 47 | 44 | 167 | 12 | 7 | 3.0  |
| 8-081-08 | 8.0                | 32              | 137 | 39 | 52 | 50 | 176 | 12 | 8 | 3.8  |
| 8-081-10 | 10.0               | 44              | 170 | 42 | 56 | 56 | 222 | 13 | 8 | 6.3  |

★ Design factor 5:1

YOKE recommends that the working load limit is reduced to meet any appropriate legislative requirements, if welding on to an excavator. Please contact your YOKE distributors for further information.



- Forged Alloy Steel-Quenched and Tempered.
- Excellent welding qualities.
- Widely used on farm machinery, trucks, steel hulled marine vessels and material handling equipment.
- Appropriate welding instructions are available upon request.



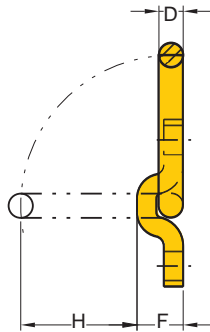
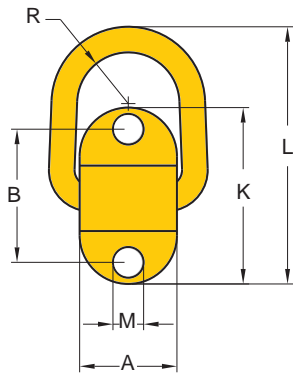
**Weld-on Lifting Point. Code “DAA” .**

| Item No.  | Working Load Limit<br>Lbs* | Dimensions (inch) |      |      |      |      |      |      | N.W.<br>Lbs |
|-----------|----------------------------|-------------------|------|------|------|------|------|------|-------------|
|           |                            | W                 | D    | F    | K    | H    | R    | L    |             |
| 8-057-1T  | 2,200                      | 1.97              | 0.55 | 1.06 | 1.50 | 2.17 | 0.94 | 4.13 | 1.1         |
| 8-057-3T  | 6,600                      | 2.28              | 0.67 | 1.34 | 1.89 | 2.36 | 1.14 | 4.41 | 1.8         |
| 8-057-5T  | 11,000                     | 2.52              | 0.87 | 1.69 | 2.40 | 2.91 | 1.30 | 6.06 | 4.0         |
| 8-057-8T  | 17,000                     | 2.40              | 1.05 | 2.12 | 2.87 | 3.22 | 1.33 | 6.65 | 5.7         |
| 8-057-10T | 22,000                     | 2.95              | 0.78 | 2.12 | 2.87 | 4.06 | 1.61 | 7.52 | 6.8         |
| 8-057-15T | 33,000                     | 3.58              | 0.98 | 2.76 | 3.66 | 4.84 | 1.97 | 9.21 | 14.3        |

★ Design factor 5:1

| Item No.  | Working Load Limit<br>tonnes* | Dimensions (mm) |    |    |    |     |    |     | N.W.<br>Kg |
|-----------|-------------------------------|-----------------|----|----|----|-----|----|-----|------------|
|           |                               | W               | D  | F  | K  | H   | R  | L   |            |
| 8-057-1T  | 1.0                           | 50              | 14 | 27 | 38 | 55  | 24 | 105 | 0.5        |
| 8-057-3T  | 3.0                           | 58              | 17 | 34 | 48 | 60  | 29 | 112 | 0.8        |
| 8-057-5T  | 5.0                           | 64              | 22 | 43 | 61 | 74  | 33 | 154 | 1.8        |
| 8-057-8T  | 8.0                           | 61              | 27 | 54 | 73 | 82  | 34 | 169 | 2.6        |
| 8-057-10T | 10.0                          | 75              | 20 | 54 | 73 | 103 | 41 | 191 | 3.0        |
| 8-057-15T | 15.0                          | 91              | 25 | 70 | 93 | 123 | 50 | 234 | 6.3        |

★ Design factor 5:1



- Forged Alloy Steel-Quenched and Tempered.
- Excellent tie down qualities.
- Widely used on farm machinery, trucks, steel hulled marine vessels and material handling equipment.
- Appropriate tie down instructions are available upon request.

**Bolt-on Tie Down. Code “DAB” .**

| Item No. | Working Load Limit<br>Lbs* | Dimensions (inch) |      |      |      |      |      |      |      |      | N.W.<br>Lbs |
|----------|----------------------------|-------------------|------|------|------|------|------|------|------|------|-------------|
|          |                            | A                 | B    | D    | F    | K    | H    | M    | L    | R    |             |
| 8-058-1T | 2,200                      | 1.97              | 2.83 | 0.55 | 1.06 | 3.86 | 2.17 | 0.55 | 5.47 | 0.94 | 1.8         |
| 8-058-3T | 6,600                      | 2.28              | 3.31 | 0.67 | 1.30 | 4.49 | 2.36 | 0.63 | 5.67 | 1.14 | 2.4         |
| 8-058-5T | 11,000                     | 2.52              | 4.57 | 0.87 | 1.69 | 6.30 | 2.91 | 0.79 | 7.99 | 1.30 | 5.5         |

- ★ Design factor 5:1
- ★ Supplied without bolt.

| Item No. | Working Load Limit<br>tonnes* | Dimensions (mm) |     |    |    |     |    |    |     |    | N.W.<br>Kg |
|----------|-------------------------------|-----------------|-----|----|----|-----|----|----|-----|----|------------|
|          |                               | A               | B   | D  | F  | K   | H  | M  | L   | R  |            |
| 8-058-1T | 1.0                           | 50              | 72  | 14 | 27 | 98  | 55 | 14 | 139 | 24 | 0.8        |
| 8-058-3T | 3.0                           | 58              | 84  | 17 | 33 | 114 | 50 | 16 | 144 | 29 | 1.1        |
| 8-058-5T | 5.0                           | 64              | 116 | 22 | 43 | 160 | 74 | 20 | 203 | 33 | 2.5        |

- ★ Design factor 5:1
- ★ Supplied without bolt.