

- Shackles are Type Approved by DNV & ABS.
- Shackles are forged alloy steel with alloy pin.
- Size and Working Load Limit permanently shown on each shackle.
- All shackles with Batch Code which links to Test Certificate and quality traceability.
- 100% magnaflux crack detection during manufacturing.
- 20,000 cycle fatigue rated to 1.5 times Working Load Limit.

YOKE 8-808 Bolt Type Anchor Shackles meet the performance requirements of Federal Specification RR-C-271D, Type 4A, Grade B, Class 3.

Type Approval



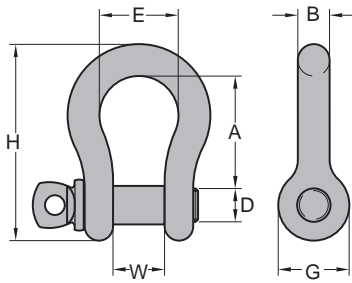
Forged Alloy Anchor Shackle, with Bolt Pin.

| Item No. | Nominal Size | Working Load Limit | Dimensions (inch) | | | | | | | N.W. |
|----------|--------------|--------------------|-------------------|------|------|------|------|------|-------|------|
| | inch | | B | D | W | A | E | G | H | |
| 8-808-08 | 5/16 | 1.2 | 0.31 | 0.37 | 0.52 | 1.22 | 0.8 | 0.75 | 2.13 | 0.2 |
| 8-808-10 | 3/8 | 2 | 0.39 | 0.43 | 0.63 | 1.42 | 1.02 | 0.91 | 2.56 | 0.2 |
| 8-808-11 | 7/16 | 2.6 | 0.43 | 0.51 | 0.75 | 1.70 | 1.18 | 1.06 | 2.95 | 0.4 |
| 8-808-13 | 1/2 | 3.4 | 0.52 | 0.63 | 0.79 | 1.85 | 1.30 | 1.18 | 3.34 | 0.9 |
| 8-808-16 | 5/8 | 5 | 0.63 | 0.75 | 1.06 | 2.40 | 1.77 | 1.53 | 4.21 | 1.5 |
| 8-808-19 | 3/4 | 7 | 0.75 | 0.87 | 1.30 | 2.83 | 1.97 | 1.81 | 5.04 | 2.2 |
| 8-808-22 | 7/8 | 9.5 | 0.87 | 1.02 | 1.50 | 3.39 | 2.28 | 2.09 | 5.91 | 3.7 |
| 8-808-26 | 1 | 12.5 | 1.02 | 1.10 | 1.73 | 3.78 | 2.68 | 2.36 | 6.57 | 5.5 |
| 8-808-28 | 1-1/8 | 15 | 1.10 | 1.26 | 1.81 | 4.37 | 2.91 | 2.68 | 7.52 | 7.5 |
| 8-808-32 | 1-1/4 | 18 | 1.26 | 1.42 | 2.12 | 4.76 | 3.22 | 2.99 | 8.07 | 10.6 |
| 8-808-36 | 1-3/8 | 21 | 1.42 | 1.50 | 2.32 | 5.28 | 3.62 | 3.31 | 9.13 | 14.3 |
| 8-808-38 | 1-1/2 | 30 | 1.50 | 1.77 | 2.36 | 5.57 | 3.90 | 3.62 | 10.00 | 19.2 |
| 8-808-45 | 1-3/4 | 40 | 1.85 | 2.00 | 2.87 | 7.00 | 5.00 | 4.17 | 12.32 | 38.1 |
| 8-808-50 | 2 | 55 | 2.09 | 2.24 | 3.27 | 7.76 | 5.75 | 4.80 | 13.66 | 51.9 |

| Item No. | Nominal Size | Working Load Limit | Dimensions (mm) | | | | | | | N.W. |
|----------|--------------|--------------------|-----------------|------|----|-----|-----|-----|-----|------|
| | mm | | B | D | W | A | E | G | H | |
| 8-808-08 | 8 | 1.2 | 8 | 9.5 | 13 | 31 | 21 | 19 | 54 | 0.1 |
| 8-808-10 | 10 | 2 | 10 | 11.0 | 16 | 36 | 26 | 23 | 65 | 0.1 |
| 8-808-11 | 11 | 2.6 | 11 | 13.0 | 19 | 43 | 30 | 27 | 75 | 0.2 |
| 8-808-13 | 13 | 3.4 | 13 | 16.0 | 20 | 47 | 33 | 30 | 85 | 0.4 |
| 8-808-16 | 16 | 5 | 16 | 19.0 | 27 | 61 | 45 | 39 | 107 | 0.7 |
| 8-808-19 | 19 | 7 | 19 | 22.0 | 33 | 72 | 50 | 46 | 126 | 1.0 |
| 8-808-22 | 22 | 9.5 | 22 | 26.0 | 38 | 86 | 58 | 53 | 148 | 1.7 |
| 8-808-26 | 26 | 12.5 | 26 | 28.0 | 44 | 96 | 68 | 60 | 166 | 2.4 |
| 8-808-28 | 28 | 15 | 28 | 32.0 | 46 | 111 | 74 | 68 | 190 | 3.4 |
| 8-808-32 | 32 | 18 | 32 | 36.0 | 54 | 121 | 82 | 76 | 210 | 4.8 |
| 8-808-36 | 36 | 21 | 36 | 38.0 | 59 | 134 | 92 | 84 | 232 | 6.6 |
| 8-808-38 | 38 | 30 | 38 | 45 | 60 | 146 | 99 | 92 | 254 | 8.4 |
| 8-808-45 | 45 | 40 | 47 | 51 | 73 | 178 | 127 | 106 | 313 | 17.3 |
| 8-808-50 | 50 | 55 | 53 | 57 | 83 | 197 | 146 | 122 | 347 | 23.6 |

★ Minimum Ultimate Load is 5.4 times the Working Load Limit.
 Maximun Proof Load is 2 times the Working Load Limit.





- Shackles are Type Approved by DNV & ABS.
- Shackles are forged alloy steel with alloy pin.
- Size and Working Load Limit permanently shown on each shackle.
- All shackles with Batch Code which links to Test Certificate and quality traceability.
- 100% magnaflux crack detection during manufacturing.
- 20,000 cycle fatigue rated to 1.5 times Working Load Limit.

YOKE 8-807 Screw Pin Anchor Shackles meet the performance requirements of Federal Specification RR-C-271D, Type 4A, Grade B, Class 2.

Type Approval



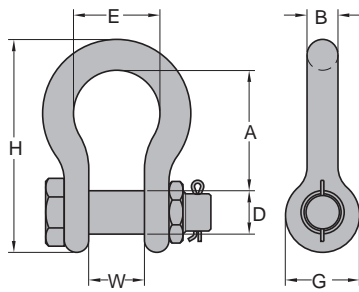
Forged Alloy Anchor shackle, with Screw Pin.

| Item No. | Nominal Size | Working Load Limit | Dimensions (inch) | | | | | | | N.W. |
|----------|--------------|--------------------|-------------------|------|------|------|------|------|------|------|
| | inch | | tonnes* | B | D | W | A | E | G | H |
| 8-807-08 | 5/16 | 1.2 | 0.31 | 0.37 | 0.47 | 1.22 | 0.83 | 0.75 | 2.13 | 0.2 |
| 8-807-10 | 3/8 | 2 | 0.39 | 0.43 | 0.63 | 1.42 | 1.02 | 0.91 | 2.56 | 0.2 |
| 8-807-11 | 7/16 | 2.6 | 0.43 | 0.51 | 0.75 | 1.70 | 1.18 | 1.06 | 2.95 | 0.4 |
| 8-807-13 | 1/2 | 3.4 | 0.52 | 0.63 | 0.79 | 1.85 | 1.30 | 1.18 | 3.34 | 0.7 |
| 8-807-16 | 5/8 | 5 | 0.63 | 0.75 | 1.06 | 2.40 | 1.77 | 1.53 | 4.21 | 1.3 |
| 8-807-19 | 3/4 | 7 | 0.75 | 0.87 | 1.30 | 2.83 | 1.97 | 1.81 | 4.96 | 2.2 |
| 8-807-22 | 7/8 | 9.5 | 0.87 | 1.02 | 1.50 | 3.39 | 2.28 | 2.09 | 5.82 | 3.3 |
| 8-807-26 | 1 | 12.5 | 1.02 | 1.10 | 1.73 | 3.78 | 2.68 | 2.36 | 6.53 | 5.1 |
| 8-807-28 | 1-1/8 | 15 | 1.10 | 1.26 | 1.81 | 4.37 | 2.91 | 2.68 | 7.48 | 7.1 |
| 8-807-32 | 1-1/4 | 18 | 1.26 | 1.42 | 2.12 | 4.76 | 3.22 | 2.99 | 8.26 | 9.7 |
| 8-807-36 | 1-3/8 | 21 | 1.42 | 1.50 | 2.32 | 5.28 | 3.62 | 3.31 | 9.13 | 13.2 |

| Item No. | Nominal Size | Working Load Limit | Dimensions (mm) | | | | | | | N.W. |
|----------|--------------|--------------------|-----------------|-----|----|-----|----|----|-----|------|
| | mm | | tonnes* | B | D | W | A | E | G | H |
| 8-807-08 | 8 | 1.2 | 8 | 9.5 | 12 | 31 | 21 | 19 | 54 | 0.1 |
| 8-807-10 | 10 | 2 | 10 | 11 | 16 | 36 | 26 | 23 | 65 | 0.1 |
| 8-807-11 | 11 | 2.6 | 11 | 13 | 19 | 43 | 30 | 27 | 75 | 0.2 |
| 8-807-13 | 13 | 3.4 | 13 | 16 | 20 | 47 | 33 | 30 | 85 | 0.3 |
| 8-807-16 | 16 | 5 | 16 | 19 | 27 | 61 | 45 | 39 | 107 | 0.6 |
| 8-807-19 | 19 | 7 | 19 | 22 | 33 | 72 | 50 | 46 | 126 | 1.0 |
| 8-807-22 | 22 | 9.5 | 22 | 26 | 38 | 86 | 58 | 53 | 148 | 1.5 |
| 8-807-26 | 26 | 12.5 | 26 | 28 | 44 | 96 | 68 | 60 | 166 | 2.3 |
| 8-807-28 | 28 | 15 | 28 | 32 | 46 | 111 | 74 | 68 | 190 | 3.2 |
| 8-807-32 | 32 | 18 | 32 | 36 | 54 | 121 | 82 | 76 | 210 | 4.4 |
| 8-807-36 | 36 | 21 | 36 | 38 | 59 | 134 | 92 | 84 | 232 | 6.0 |

★ Minimum Ultimate Load is 5.4 times the Working Load Limit.
 Maximum Proof Load is 2 times the Working Load Limit.





- Shackles are Type Approved by DNV & ABS.
- Shackles are forged carbon steel with alloy pin.
- Size and Working Load Limit permanently shown on each shackle.
- All shackles with Batch Code which links to Test Certificate and quality traceability.
- 100% magnaflux crack detection during manufacturing.
- 20,000 cycle fatigue rated to 1.5 times Working Load Limit.

YOKE 8-838 Carbon Bolt Type Anchor Shackles meet the performance requirements of Federal Specification RR-C-271D, Type 4A, Grade A, Class 3.

Type Approval



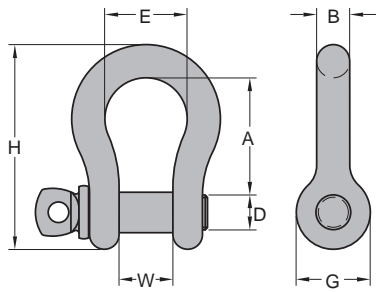
Forged Anchor Shackle, with Bolt Pin. Carbon Steel

| Item No. | Nominal Size | Working Load Limit | Dimensions (inch) | | | | | | | N.W. |
|----------|--------------|--------------------|-------------------|------|------|------|------|------|-------|------|
| | inch | | B | D | W | A | E | G | H | |
| 8-838-08 | 5/16 | 0.75 | 0.31 | 0.37 | 0.47 | 1.22 | 0.82 | 0.75 | 2.13 | 0.2 |
| 8-838-10 | 3/8 | 1 | 0.39 | 0.43 | 0.63 | 1.42 | 1.02 | 0.91 | 2.56 | 0.2 |
| 8-838-11 | 7/16 | 1.5 | 0.43 | 0.51 | 0.75 | 1.70 | 1.18 | 1.06 | 2.95 | 0.4 |
| 8-838-13 | 1/2 | 2 | 0.52 | 0.63 | 0.79 | 1.85 | 1.30 | 1.18 | 3.34 | 0.9 |
| 8-838-16 | 5/8 | 3.25 | 0.63 | 0.75 | 1.06 | 2.40 | 1.70 | 1.50 | 4.17 | 1.5 |
| 8-838-19 | 3/4 | 4.75 | 0.75 | 0.87 | 1.30 | 2.83 | 1.97 | 1.81 | 5.04 | 2.2 |
| 8-838-22 | 7/8 | 6.5 | 0.87 | 1.02 | 1.50 | 3.39 | 2.28 | 2.09 | 5.91 | 3.7 |
| 8-838-26 | 1 | 8.5 | 1.02 | 1.10 | 1.73 | 3.78 | 2.68 | 2.40 | 6.57 | 5.5 |
| 8-838-28 | 1-1/8 | 9.5 | 1.10 | 1.26 | 1.81 | 4.37 | 2.91 | 2.68 | 7.52 | 7.5 |
| 8-838-32 | 1-1/4 | 12 | 1.26 | 1.42 | 2.12 | 4.76 | 3.30 | 2.99 | 8.07 | 10.6 |
| 8-838-36 | 1-3/8 | 13.5 | 1.42 | 1.50 | 2.32 | 5.28 | 3.62 | 3.31 | 9.13 | 14.8 |
| 8-838-38 | 1-1/2 | 17 | 1.50 | 1.77 | 2.36 | 5.57 | 3.90 | 3.62 | 10.00 | 19.2 |
| 8-838-45 | 1-3/4 | 25 | 1.85 | 2.00 | 2.87 | 7.00 | 5.00 | 4.17 | 12.32 | 38.1 |
| 8-838-50 | 2 | 35 | 2.09 | 2.24 | 3.27 | 7.76 | 5.75 | 4.80 | 13.66 | 53.4 |

| Item No. | Nominal Size | Working Load Limit | Dimensions (mm) | | | | | | | N.W. |
|----------|--------------|--------------------|-----------------|-----|----|-----|-----|-----|-----|------|
| | mm | | B | D | W | A | E | G | H | |
| 8-838-08 | 8 | 0.75 | 8 | 9.5 | 12 | 31 | 21 | 19 | 54 | 0.1 |
| 8-838-10 | 10 | 1 | 10 | 11 | 16 | 36 | 26 | 23 | 65 | 0.1 |
| 8-838-11 | 11 | 1.5 | 11 | 13 | 19 | 43 | 30 | 27 | 75 | 0.2 |
| 8-838-13 | 13 | 2 | 13 | 16 | 20 | 47 | 33 | 30 | 85 | 0.4 |
| 8-838-16 | 16 | 3.25 | 16 | 19 | 27 | 61 | 43 | 38 | 106 | 0.7 |
| 8-838-19 | 19 | 4.75 | 19 | 22 | 33 | 72 | 50 | 46 | 126 | 1.0 |
| 8-838-22 | 22 | 6.5 | 22 | 26 | 38 | 86 | 58 | 53 | 148 | 1.7 |
| 8-838-26 | 26 | 8.5 | 26 | 28 | 44 | 96 | 68 | 61 | 166 | 2.5 |
| 8-838-28 | 28 | 9.5 | 28 | 32 | 46 | 111 | 74 | 68 | 190 | 3.4 |
| 8-838-32 | 32 | 12 | 32 | 36 | 54 | 121 | 84 | 76 | 210 | 4.8 |
| 8-838-36 | 36 | 13.5 | 36 | 38 | 59 | 134 | 92 | 84 | 232 | 6.7 |
| 8-838-38 | 38 | 17 | 38 | 45 | 60 | 146 | 99 | 92 | 254 | 8.7 |
| 8-838-45 | 45 | 25 | 47 | 51 | 73 | 178 | 127 | 106 | 313 | 17.3 |
| 8-838-50 | 51 | 35 | 53 | 57 | 83 | 197 | 146 | 122 | 347 | 24.2 |

★ Minimum Ultimate Load is 5.4 times the Working Load Limit.
 Maximun Proof Load is 2 times the Working Load Limit.





- Shackles are Type Approved by DNV & ABS.
- Shackles are forged carbon steel with alloy pin.
- Size and Working Load Limit permanently shown on each shackle.
- All shackles with Batch Code which links to Test Certificate and quality traceability.
- 100% magnaflux crack detection during manufacturing.
- 20,000 cycle fatigue rated to 1.5 times Working Load Limit.

YOKE 8-837 Carbon Bolt Type Anchor Shackles meet the performance requirements of Federal Specification RR-C-271D, Type 4A, Grade A, Class 2.

Type Approval



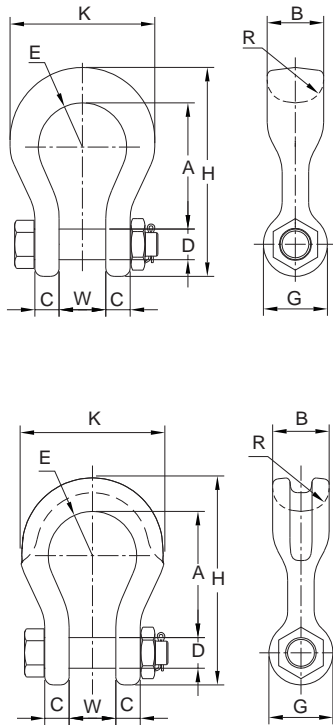
Forged Anchor Shackle, with Screw Pin. Carbon Steel

| Item No. | Nominal Size | Working Load Limit | Dimensions (inch) | | | | | | | N.W. |
|----------|--------------|--------------------|-------------------|------|------|------|------|------|-------|------|
| | inch | | tonnes* | B | D | W | A | E | G | H |
| 8-837-06 | 1/4 | 0.5 | 0.26 | 0.32 | 0.47 | 1.10 | 0.80 | 0.63 | 1.85 | 0.1 |
| 8-837-08 | 5/16 | 0.75 | 0.31 | 0.37 | 0.47 | 1.22 | 0.82 | 0.75 | 2.13 | 0.2 |
| 8-837-10 | 3/8 | 1 | 0.39 | 0.43 | 0.63 | 1.42 | 1.02 | 0.91 | 2.56 | 0.2 |
| 8-837-11 | 7/16 | 1.5 | 0.43 | 0.51 | 0.75 | 1.70 | 1.18 | 1.06 | 2.95 | 0.4 |
| 8-837-13 | 1/2 | 2 | 0.52 | 0.63 | 0.79 | 1.85 | 1.30 | 1.18 | 3.34 | 0.7 |
| 8-837-16 | 5/8 | 3.25 | 0.63 | 0.75 | 1.06 | 2.40 | 1.70 | 1.50 | 4.17 | 1.3 |
| 8-837-19 | 3/4 | 4.75 | 0.75 | 0.87 | 1.30 | 2.83 | 1.96 | 1.81 | 5.04 | 2.4 |
| 8-837-22 | 7/8 | 6.5 | 0.87 | 1.02 | 1.50 | 3.39 | 2.28 | 2.08 | 5.91 | 3.5 |
| 8-837-26 | 1 | 8.5 | 1.02 | 1.10 | 1.73 | 3.78 | 2.68 | 2.67 | 6.57 | 5.7 |
| 8-837-28 | 1-1/8 | 9.5 | 1.10 | 1.26 | 1.81 | 4.37 | 2.91 | 2.68 | 7.52 | 7.1 |
| 8-837-32 | 1-1/4 | 12 | 1.26 | 1.42 | 2.12 | 4.76 | 3.30 | 2.99 | 8.07 | 9.9 |
| 8-837-36 | 1-3/8 | 13.5 | 1.42 | 1.50 | 2.32 | 5.28 | 3.62 | 3.30 | 9.13 | 13.9 |
| 8-837-38 | 1-1/2 | 17 | 1.50 | 1.77 | 2.36 | 5.75 | 3.90 | 3.62 | 10.00 | 17.4 |
| 8-837-45 | 1-3/4 | 25 | 1.85 | 2.00 | 2.87 | 7.00 | 5.00 | 4.17 | 12.32 | 36.1 |
| 8-837-50 | 2 | 35 | 2.09 | 2.24 | 3.27 | 7.76 | 5.75 | 4.80 | 13.66 | 46.2 |

| Item No. | Nominal Size | Working Load Limit | Dimensions (mm) | | | | | | | N.W. |
|----------|--------------|--------------------|-----------------|-----|----|-----|-----|-----|-----|------|
| | mm | | tonnes* | B | D | W | A | E | G | H |
| 8-837-06 | 6 | 0.5 | 6.5 | 8 | 12 | 28 | 20 | 16 | 47 | 0.05 |
| 8-837-08 | 8 | 0.75 | 8 | 9.5 | 12 | 31 | 21 | 19 | 54 | 0.1 |
| 8-837-10 | 10 | 1 | 10 | 11 | 16 | 36 | 26 | 23 | 65 | 0.1 |
| 8-837-11 | 11 | 1.5 | 11 | 13 | 19 | 43 | 30 | 27 | 75 | 0.2 |
| 8-837-13 | 13 | 2 | 13 | 16 | 20 | 47 | 33 | 30 | 85 | 0.3 |
| 8-837-16 | 16 | 3.25 | 16 | 19 | 27 | 61 | 43 | 38 | 106 | 0.6 |
| 8-837-19 | 19 | 4.75 | 19 | 22 | 33 | 72 | 50 | 46 | 126 | 1.1 |
| 8-837-22 | 22 | 6.5 | 22 | 26 | 38 | 86 | 58 | 53 | 148 | 1.6 |
| 8-837-26 | 26 | 8.5 | 26 | 28 | 44 | 96 | 69 | 61 | 166 | 2.3 |
| 8-837-28 | 28 | 9.5 | 28 | 32 | 46 | 111 | 74 | 68 | 190 | 3.2 |
| 8-837-32 | 32 | 12 | 32 | 36 | 54 | 121 | 84 | 76 | 210 | 4.5 |
| 8-837-36 | 36 | 13.5 | 36 | 38 | 59 | 134 | 92 | 84 | 232 | 6.3 |
| 8-837-38 | 38 | 17 | 38 | 45 | 60 | 146 | 99 | 92 | 254 | 7.9 |
| 8-837-45 | 45 | 25 | 47 | 51 | 73 | 178 | 127 | 106 | 313 | 16.4 |
| 8-837-50 | 51 | 35 | 53 | 57 | 83 | 197 | 146 | 122 | 347 | 21.0 |

★ Minimum Ultimate Load is 5.4 times the Working Load Limit.
 Maximum Proof Load is 2 times the Working Load Limit.





- Shackles are forged alloy steel with alloy pin.
- Size and Working Load Limit permanently shown on each shackle.
- All shackles with Batch Code which links to Test Certificate and quality traceability.
- 100% magnaflux crack detection during manufacturing.
- 20,000 cycle fatigue rated to 1.5 times Working Load Limit.

Forged Alloy Wide Body Shackle, with Bolt Pin.

| Item No. | Nominal Size | Working Load Limit | Dimensions (inch) | | | | | | | | | | N.W. |
|----------|--------------|--------------------|-------------------|------|------|------|------|------|-------|------|------|------|------|
| | | | A | B | C | D | E | G | H | K | R | W | |
| 8-809-19 | 3/4 | 7 | 3.58 | 1.61 | 0.70 | 0.87 | 1.26 | 1.81 | 5.90 | 1.26 | 1.81 | 5.90 | 3.7 |
| 8-809-26 | 1 | 12.5 | 4.64 | 2.12 | 0.91 | 1.14 | 1.61 | 2.40 | 7.64 | 5.51 | 1.38 | 1.73 | 8.4 |
| 8-809-32 | 1-1/4 | 18 | 5.83 | 2.52 | 1.18 | 1.42 | 2.00 | 2.68 | 9.37 | 6.77 | 1.50 | 2.13 | 14.8 |
| 8-809-38 | 1-1/2 | 30 | 6.93 | 3.15 | 1.38 | 1.77 | 2.50 | 3.50 | 11.38 | 8.50 | 1.77 | 2.36 | 27.6 |

★ Minimum Ultimate Load is 5 times the Working Load Limit.
 Maximun Proof Load is 2 times the Working Load Limit.

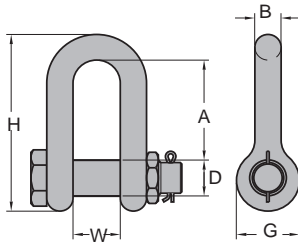
| Item No. | Nominal Size | Working Load Limit | Dimensions (mm) | | | | | | | | | | N.W. |
|----------|--------------|--------------------|-----------------|----|----|----|----|----|-----|-----|----|----|------|
| | | | A | B | C | D | E | G | H | K | R | W | |
| 8-809-19 | 19 | 7 | 91 | 41 | 18 | 22 | 32 | 46 | 150 | 104 | 32 | 33 | 1.7 |
| 8-809-26 | 26 | 12.5 | 118 | 54 | 23 | 29 | 41 | 61 | 194 | 140 | 35 | 44 | 3.8 |
| 8-809-32 | 32 | 18 | 148 | 64 | 30 | 36 | 51 | 68 | 238 | 172 | 38 | 54 | 6.7 |
| 8-809-38 | 38 | 30 | 176 | 80 | 35 | 45 | 64 | 89 | 289 | 216 | 45 | 60 | 12.5 |

★ Minimum Ultimate Load is 5 times the Working Load Limit.
 Maximun Proof Load is 2 times the Working Load Limit.

Forged Alloy Chain Shackle, with Bolt Pin.



- Shackles are Type Approved by DNV & ABS.
- Shackles are forged alloy steel with alloy pin.
- Size and Working Load Limit permanently shown on each shackle.
- All shackles with Batch Code which links to Test Certificate and quality traceability.
- 100% magnaflux crack detection during manufacturing.
- 20,000 cycle fatigue rated to 1.5 times Working Load Limit.



YOKE 8-805 Bolt Type Anchor Shackles meet the performance requirements of Federal Specification RR-C-271D, Type 4B, Grade B, Class 3.

| Item No. | Nominal Size | Working Load Limit | Dimensions (mm) | | | | | | N.W. |
|----------|--------------|--------------------|-----------------|----|-----|----|----|-----|------|
| | inch | | tonnes* | W | D | A | B | G | |
| 8-805-16 | 5/8 | 5 | 27 | 19 | 60 | 16 | 38 | 106 | 0.6 |
| 8-805-19 | 3/4 | 7 | 33 | 22 | 71 | 19 | 46 | 126 | 1.0 |
| 8-805-22 | 7/8 | 9.5 | 38 | 26 | 87 | 22 | 53 | 148 | 1.6 |
| 8-805-26 | 1 | 12.5 | 44 | 28 | 95 | 26 | 60 | 166 | 2.4 |
| 8-805-28 | 1-1/8 | 15 | 46 | 32 | 108 | 28 | 68 | 190 | 3.3 |
| 8-805-32 | 1-1/4 | 18 | 52 | 36 | 119 | 32 | 76 | 210 | 4.5 |
| 8-805-36 | 1-3/8 | 21 | 57 | 38 | 133 | 36 | 84 | 232 | 6.1 |

Type Approval



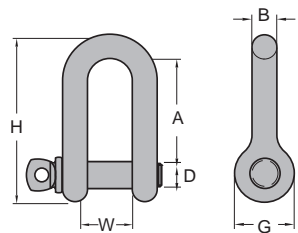
Type Approval

- ★ Minimum Ultimate Load is 5.4 times the Working Load Limit.
- Maximun Proof Load is 2.0 times the Working Load Limit.

Forged Alloy Chain Shackle, with Screw Pin.



- Shackles are Type Approved by DNV & ABS.
- Shackles are forged alloy steel with alloy pin.
- Size and Working Load Limit permanently shown on each shackle.
- All shackles with Batch Code which links to Test Certificate and quality traceability.
- 100% magnaflux crack detection during manufacturing.
- 20,000 cycle fatigue rated to 1.5 times Working Load Limit.



YOKE 8-804 Bolt Type Anchor Shackles meet the performance requirements of Federal Specification RR-C-271D, Type 4B, Grade B, Class 2.

| Item No. | Nominal Size | Working Load Limit | Dimensions (mm) | | | | | | N.W. |
|----------|--------------|--------------------|-----------------|-----|-----|----|----|-----|------|
| | inch | | tonnes* | W | D | A | B | G | |
| 8-804-08 | 5/16 | 1.2 | 13 | 9.5 | 31 | 8 | 19 | 52 | 0.1 |
| 8-804-10 | 3/8 | 2 | 16 | 11 | 36 | 10 | 23 | 63 | 0.1 |
| 8-804-11 | 7/16 | 2.6 | 19 | 13 | 43 | 11 | 27 | 74 | 0.2 |
| 8-804-13 | 1/2 | 3.4 | 20 | 16 | 47 | 13 | 30 | 83 | 0.3 |
| 8-804-16 | 5/8 | 5 | 27 | 19 | 60 | 16 | 38 | 106 | 0.6 |
| 8-804-19 | 3/4 | 7 | 33 | 22 | 71 | 19 | 46 | 126 | 0.9 |
| 8-804-22 | 7/8 | 9.5 | 38 | 26 | 87 | 22 | 53 | 148 | 1.4 |
| 8-804-26 | 1 | 12.5 | 44 | 28 | 95 | 26 | 60 | 166 | 2.2 |
| 8-804-28 | 1-1/8 | 15 | 46 | 32 | 108 | 28 | 68 | 190 | 3.0 |
| 8-804-32 | 1-1/4 | 18 | 52 | 36 | 119 | 32 | 76 | 210 | 4.2 |
| 8-804-36 | 1-3/8 | 21 | 57 | 38 | 133 | 36 | 84 | 232 | 5.7 |

Type Approval

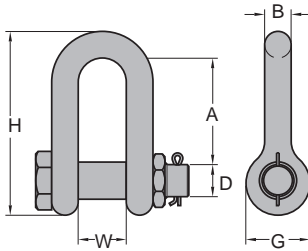


- ★ Minimum Ultimate Load is 5.4 times the Working Load Limit.
- Maximun Proof Load is 2.0 times the Working Load Limit.

Forged Chain Shackle, with Bolt Pin.



- Shackles are Type Approved by ABS.
- Shackles are forged carbon steel with alloy pin.
- Size and Working Load Limit permanently shown on each shackle.
- All shackles with Batch Code which links to Test Certificate and quality traceability.
- 100% magnaflux crack detection during manufacturing.
- 20,000 cycle fatigue rated to 1.5 times Working Load Limit.



YOKE 8-835 Bolt Type Anchor Shackles meet the performance requirements of Federal Specification RR-C-271D, Type 4B, Grade A, Class 3.

Type Approval



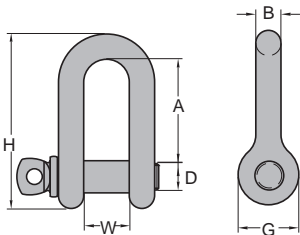
| Item No. | Nominal Size | Working Load Limit | Dimensions (mm) | | | | | | N.W. |
|----------|--------------|--------------------|-----------------|-----|----|-----|----|-----|------|
| | inch | | tonnes* | B | D | W | A | G | H |
| 8-835-08 | 5/16 | 0.75 | 8 | 9.5 | 13 | 31 | 19 | 52 | 0.1 |
| 8-835-10 | 3/8 | 1 | 10 | 11 | 16 | 36 | 23 | 63 | 0.1 |
| 8-835-11 | 7/16 | 1.5 | 11 | 13 | 19 | 43 | 27 | 74 | 0.2 |
| 8-835-13 | 1/2 | 2 | 13 | 16 | 20 | 57 | 30 | 83 | 0.3 |
| 8-835-16 | 5/8 | 3.25 | 16 | 19 | 27 | 60 | 38 | 106 | 0.6 |
| 8-835-19 | 3/4 | 4.75 | 19 | 22 | 33 | 71 | 46 | 126 | 1.0 |
| 8-835-22 | 7/8 | 6.5 | 22 | 26 | 38 | 87 | 53 | 148 | 1.6 |
| 8-835-26 | 1 | 8.5 | 26 | 28 | 44 | 95 | 60 | 166 | 2.4 |
| 8-835-28 | 1-1/8 | 9.5 | 28 | 32 | 46 | 108 | 68 | 190 | 3.2 |
| 8-835-32 | 1-1/4 | 12 | 32 | 36 | 52 | 119 | 76 | 210 | 4.5 |
| 8-835-36 | 1-3/8 | 13.5 | 36 | 38 | 57 | 133 | 84 | 232 | 6.1 |

- ★ Minimum Ultimate Load is 6 times the Working Load Limit.
- Maximum Proof Load is 2 times the Working Load Limit.

Forged Chain Shackle, with Screw Pin.



- Shackles are Type Approved by ABS.
- Shackles are forged carbon steel with alloy pin.
- Size and Working Load Limit permanently shown on each shackle.
- All shackles with Batch Code which links to Test Certificate and quality traceability.
- 100% magnaflux crack detection during manufacturing.
- 20,000 cycle fatigue rated to 1.5 times Working Load Limit.



YOKE 8-834 Screw Pin Chain Shackles meet the performance requirements of Federal Specification RR-C-271D, Type 4B, Grade A, Class 2.

Type Approval



| Item No. | Nominal Size | Working Load Limit | Dimensions (mm) | | | | | | N.W. |
|----------|--------------|--------------------|-----------------|-----|----|-----|----|-----|------|
| | inch | | tonnes* | B | D | W | A | G | H |
| 8-834-08 | 5/16 | 0.75 | 8 | 9.5 | 13 | 31 | 19 | 52 | 0.1 |
| 8-834-10 | 3/8 | 1 | 10 | 11 | 16 | 36 | 23 | 63 | 0.1 |
| 8-834-11 | 7/16 | 1.5 | 11 | 13 | 19 | 43 | 27 | 74 | 0.2 |
| 8-834-13 | 1/2 | 2 | 13 | 16 | 20 | 57 | 30 | 83 | 0.3 |
| 8-834-16 | 5/8 | 3.25 | 16 | 19 | 27 | 60 | 38 | 106 | 0.6 |
| 8-834-19 | 3/4 | 4.75 | 19 | 22 | 33 | 71 | 46 | 126 | 1.0 |
| 8-834-22 | 7/8 | 6.5 | 22 | 26 | 38 | 87 | 53 | 148 | 1.4 |
| 8-834-26 | 1 | 8.5 | 26 | 28 | 44 | 95 | 60 | 166 | 2.2 |
| 8-834-28 | 1-1/8 | 9.5 | 28 | 32 | 46 | 108 | 68 | 190 | 3.0 |
| 8-834-32 | 1-1/4 | 12 | 32 | 36 | 52 | 119 | 76 | 210 | 4.1 |
| 8-834-36 | 1-3/8 | 13.5 | 36 | 38 | 57 | 133 | 84 | 232 | 5.7 |

- ★ Minimum Ultimate Load is 6 times the Working Load Limit.
- Maximum Proof Load is 2 times the Working Load Limit.